



Digital Twin for unmanned facilities

Aberdeen
12-13 June 2018



KONGSBERG

KONGSBERG group – Technology innovation



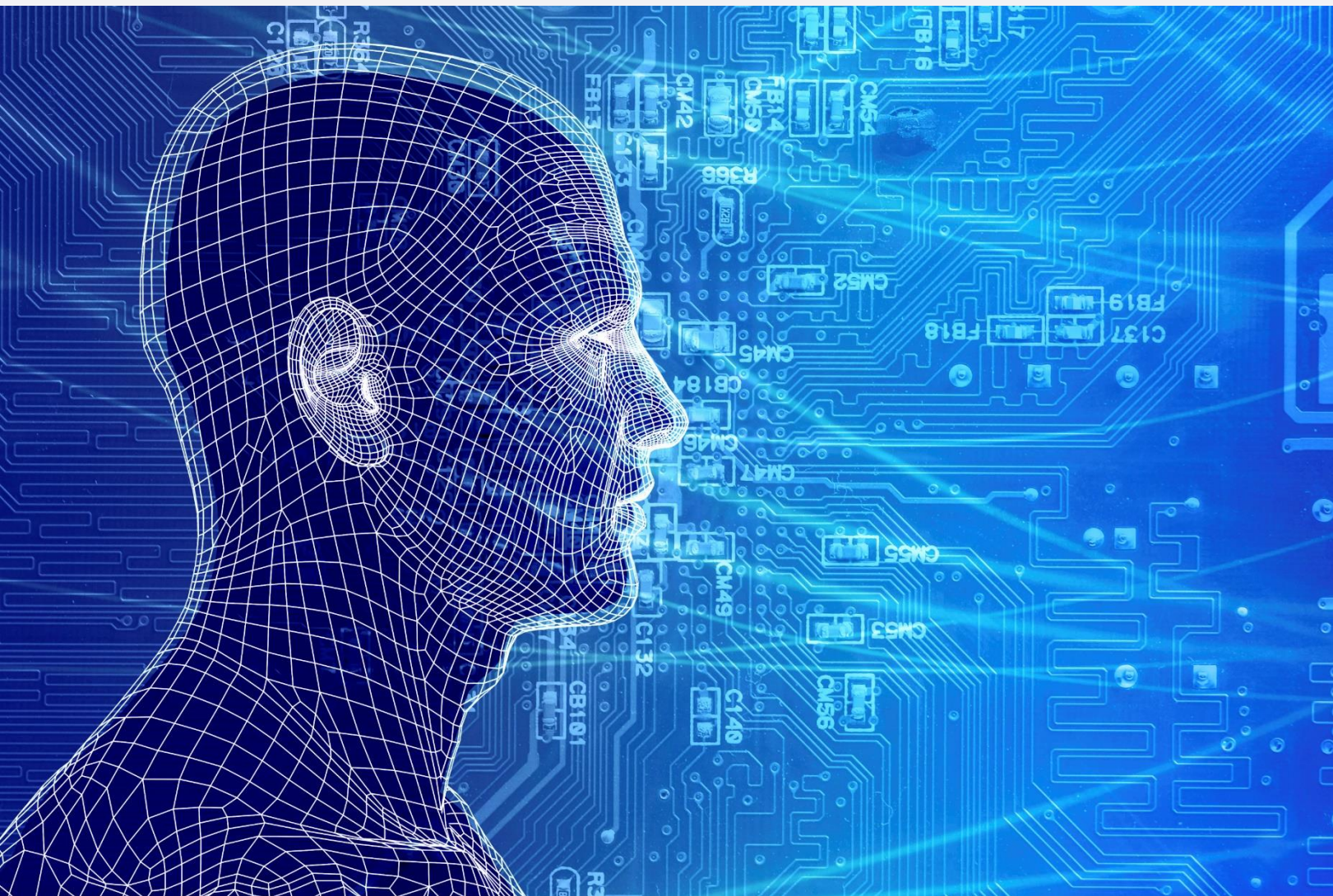
KONGSBERG



Disruptive digitalization projects



What is a Digital Twin?

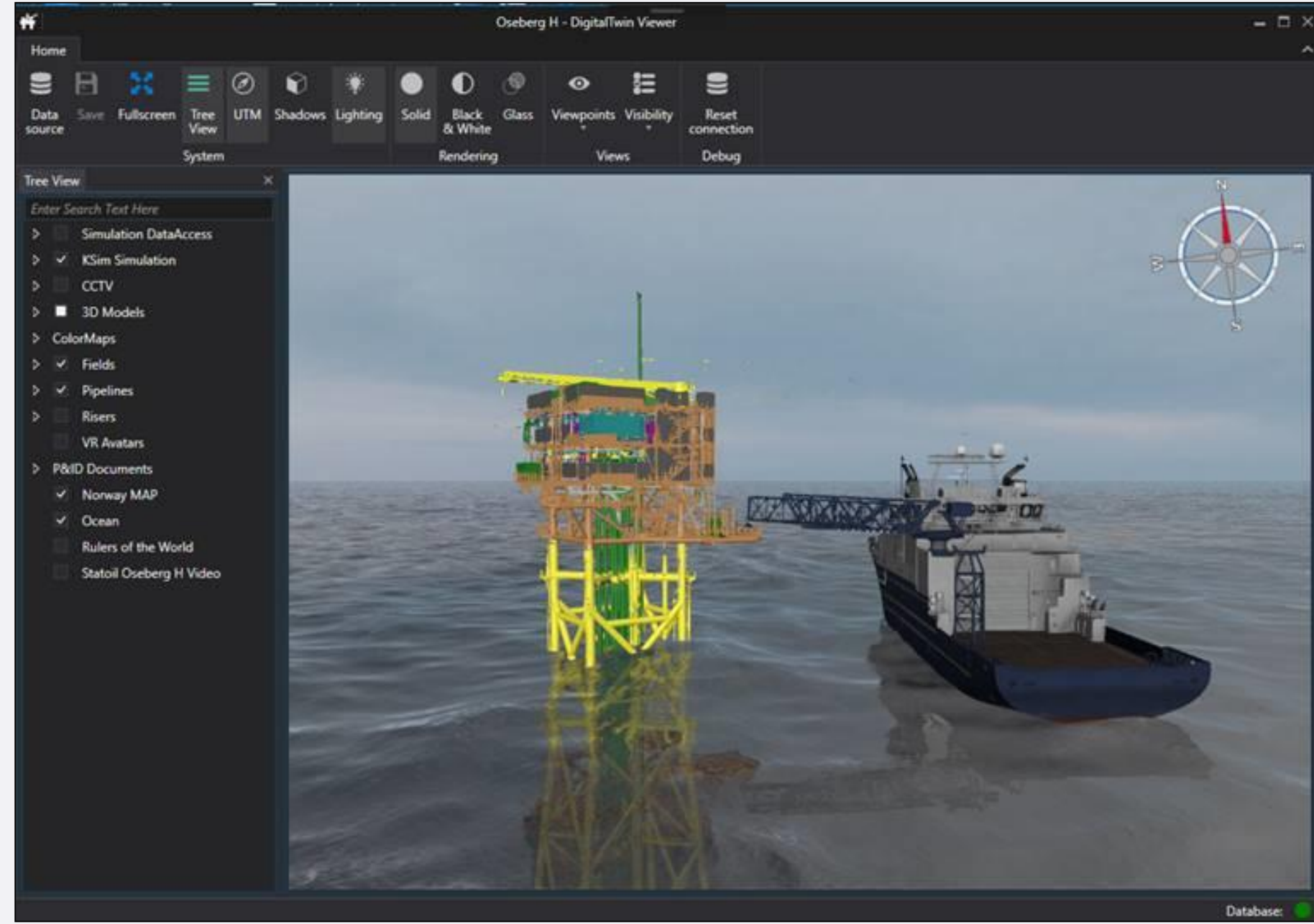


- Comprehensive replica & accurate representation
- Advanced analytics and machine learning
- Static, historical and real-time data

- Technical to business operations usage
- Context dependent user interface



KONGBERG



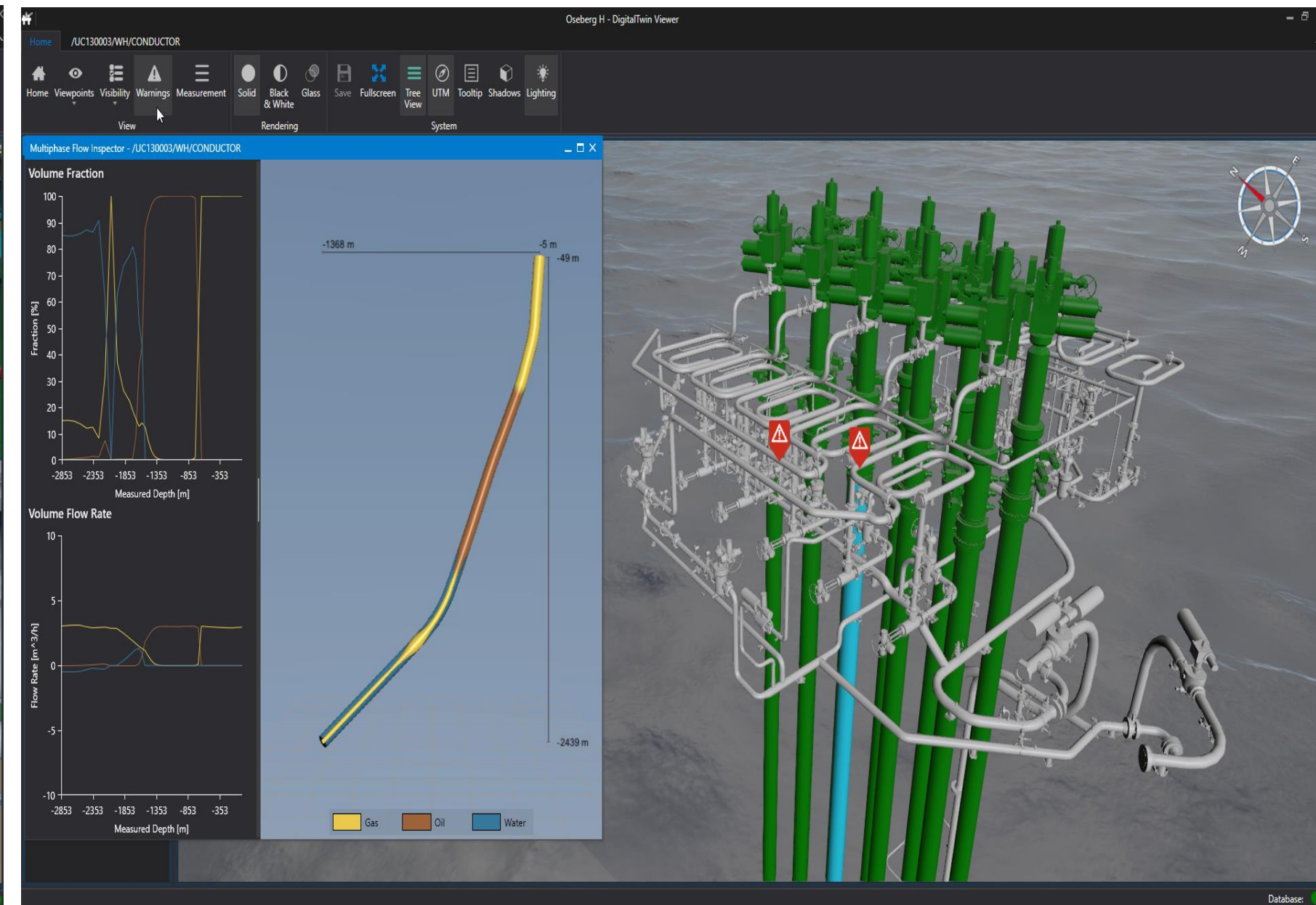
The installation

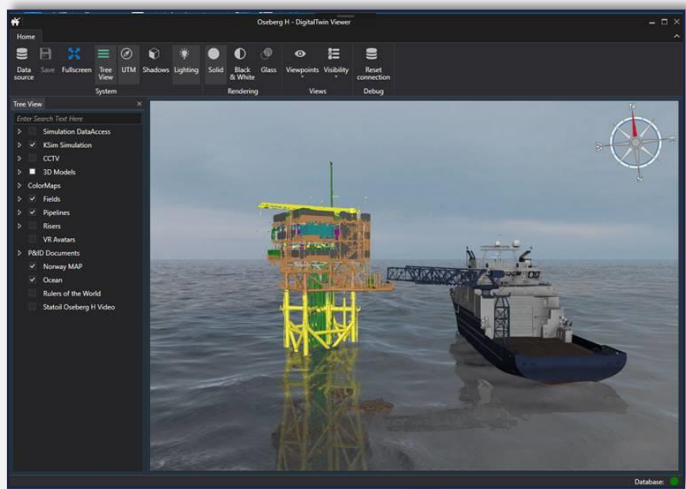
The Digital Twin







Digital Twin Screenshots



KONGSBERG





- 
 Integrated Field Development Team
- 
 Control Room, Operation Center
- 
 Integrated Operation Center
- 
 Plan & Expert Centers
- 
 Maintenance Team
- 
 Vendors Others

Application Areas

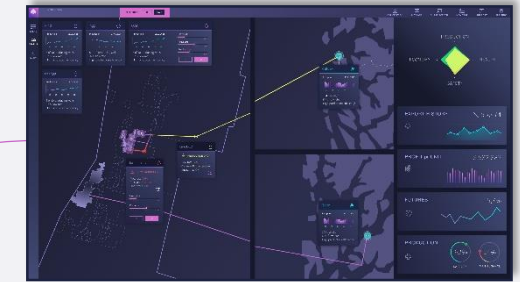
Field Development & Modifications

Drilling & Wells

Production Optimization

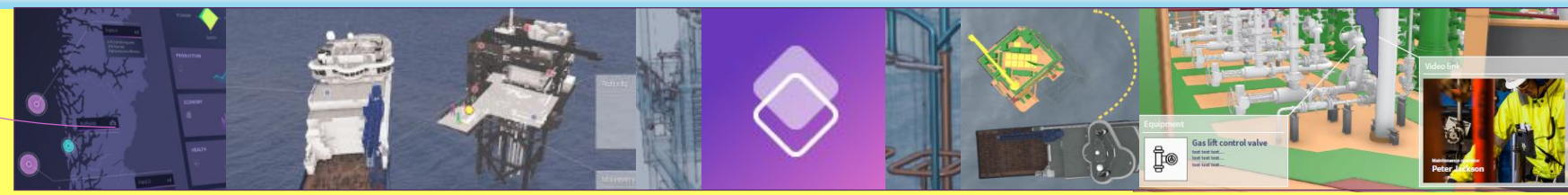
Operations & Maintenance

Maritime Ops & Logistics



Visualization & Collaboration

Digital Infrastructure & Simulators



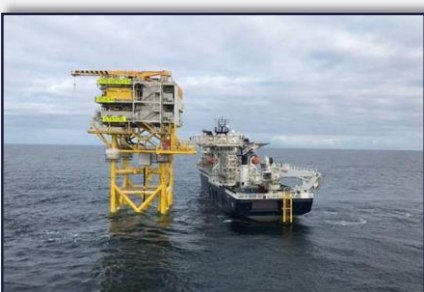
Models & Services

Application Programming Interfaces (API)

| | | | | | |
|------------------|----------------------|---------------|--------------|------------------------|--|
| App Framework | Visualization Engine | Data Services | GIS AIS | Analytics & ML Engines | Simulation Engines Physical / Mathematical Models Data Driven (AI) Models Hybrid Models |
| Real Time Data | Historian | Business Data | Asset Models | 3D Models | |
| Digital Platform | | | | | |

Lifecycle Management

Client Data Platform
kognif ai

Physical Asset

Facility

Edge Gateway
IMS
SAS | Autonomy
Equipment Packages

Roaming Assets

Vessel
Helicopter
Drone



Topside
Subsurface

Well & Reservoir





New Operational concept

NORWEGIAN SEA Krafla

SYSTEM WARNINGS

- Alert: Oilberg
Task: Maintenance task
Responsibility: Production team 1
- Alert: Platform
Task: Production failure
Responsibility: Production team 2

REQUESTED TASKS

- Alert: Krafla
Task: Increase production
Responsibility: Production team 2
- Alert: Free
Task: Maintenance task
Responsibility: Not assigned

Task description

Task: Please increase production on the BP varied wells by 10% ASAP

Asset: Krafla, Norwegian Sea **Region:** Arctic

Limitations: System (steam) color of asset **Production Team:** 2

PRODUCTION RATE

Inspector

SIMULATED PROCEDURE

PERFORMANCE RESULTS

TASK HISTORY LOG

| TASK ID | DESCRIPTION | DATE | COMPLETED |
|---------|--|---------------------|-----------|
| 1001 | Increase production with 10% | 2018-01-12 10:00 am | Completed |
| 1002 | Simulation procedure with change procedure | 2018-01-12 11:00 am | Completed |
| 1003 | Production evaluation in 30s | 2018-01-12 12:00 pm | Completed |
| 1004 | System error from 30s with 10% production 1% | 2018-01-12 12:30 pm | Completed |

Free Task

Gas: 10000000

Water: 10000000

Oil: 10000000

Steam: 10000000

Pressure: 10000000

Temperature: 10000000

Process Flow Diagram

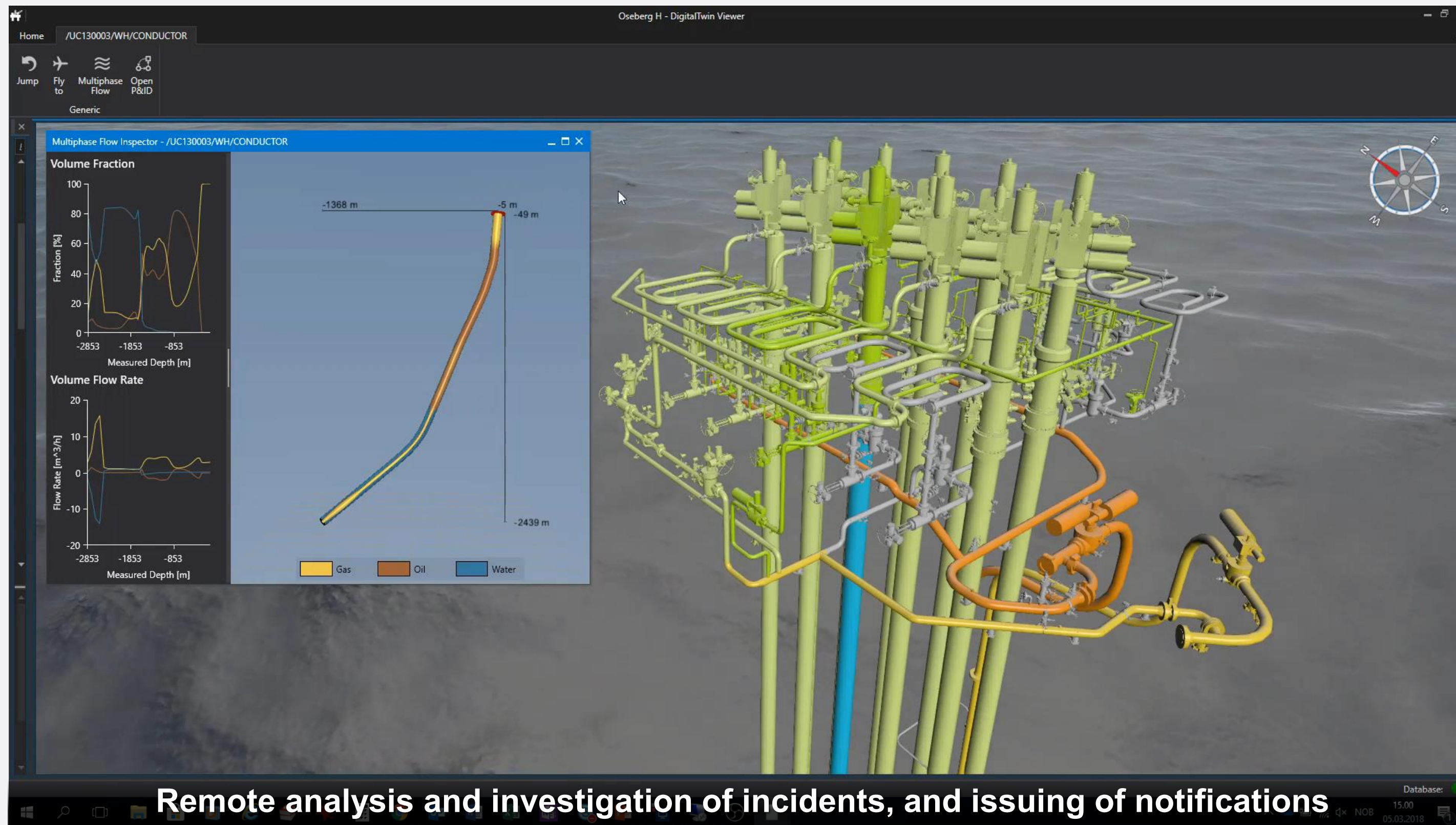
Components: FC, FT, PV, F106

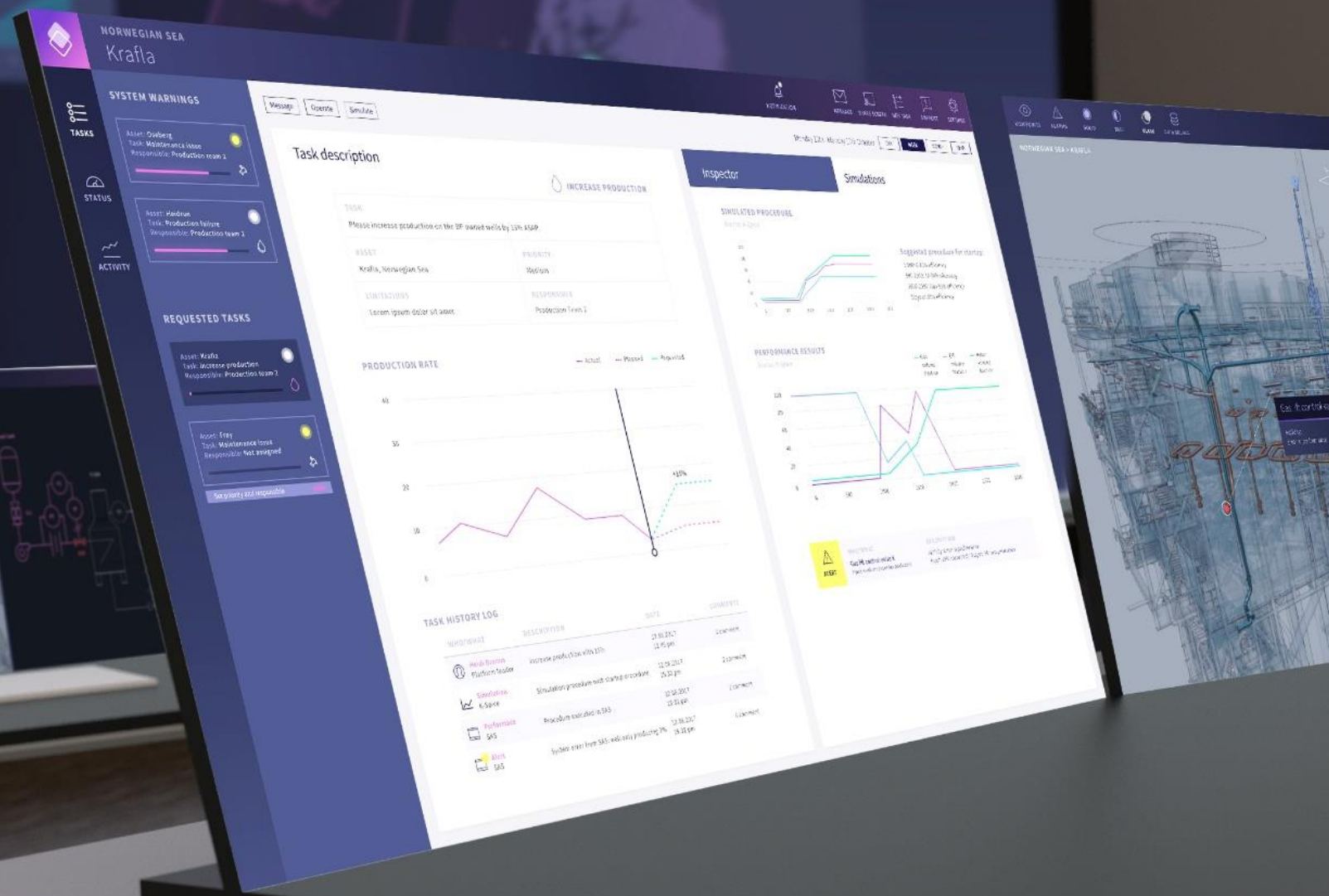
Process Flow Diagram

Components: FC, FT, PV, F106


Laptop Display

Monitor performance and solve problems





MAINTENANCE REQUEST
✕

| | | | | | |
|--------------------------|--|--|--|--|---|
| ASSET: | Krafla | | OWNER: | | |
| TASK SUBJECT: | Equipment failure | | Name: Heidi Drumm Role: Platform Leader | TASK ID: | #233406 |
| Part ID: | Gas release valve #3457 | |  Gas release valve #3457 View History | TASK LOGG: | 21-12-2017 / 21.21 Leder production team 2 Linn Messel accepts task |
| Equipent issue: | Replacement | | | 22-12-2017 / 00.21 Leder production team 2 Linn Messel submits order to OPS team 1 | 22-12-2017 / 01.21 Leder OPS team 1 Fred perry executes change in SAS |
| LIMITATIONS: | None | | | 22-12-2017 / 0200 System warning created | |
| PRIORITY: | LOW | | | 22-12-2017 / 0200 System warning created Leder production team 2 Linn Messel accepts task | |
| ASSIGN TO: | Maintenance | | | 22-12-2017 / 00.21 Leder production team 2 Linn Messel submits order to maintenance team 1 | |
| TASK DESCRIPTION: | Equipent failed to comply with input parameters. production optimisation is assign to production team 2 | | | | |
| SUBMIT ORDER | | | | | |

1- Faulty gaslift valve must be replaced.

2 – Reconfigure production settings to maintain production

Issue Work Order

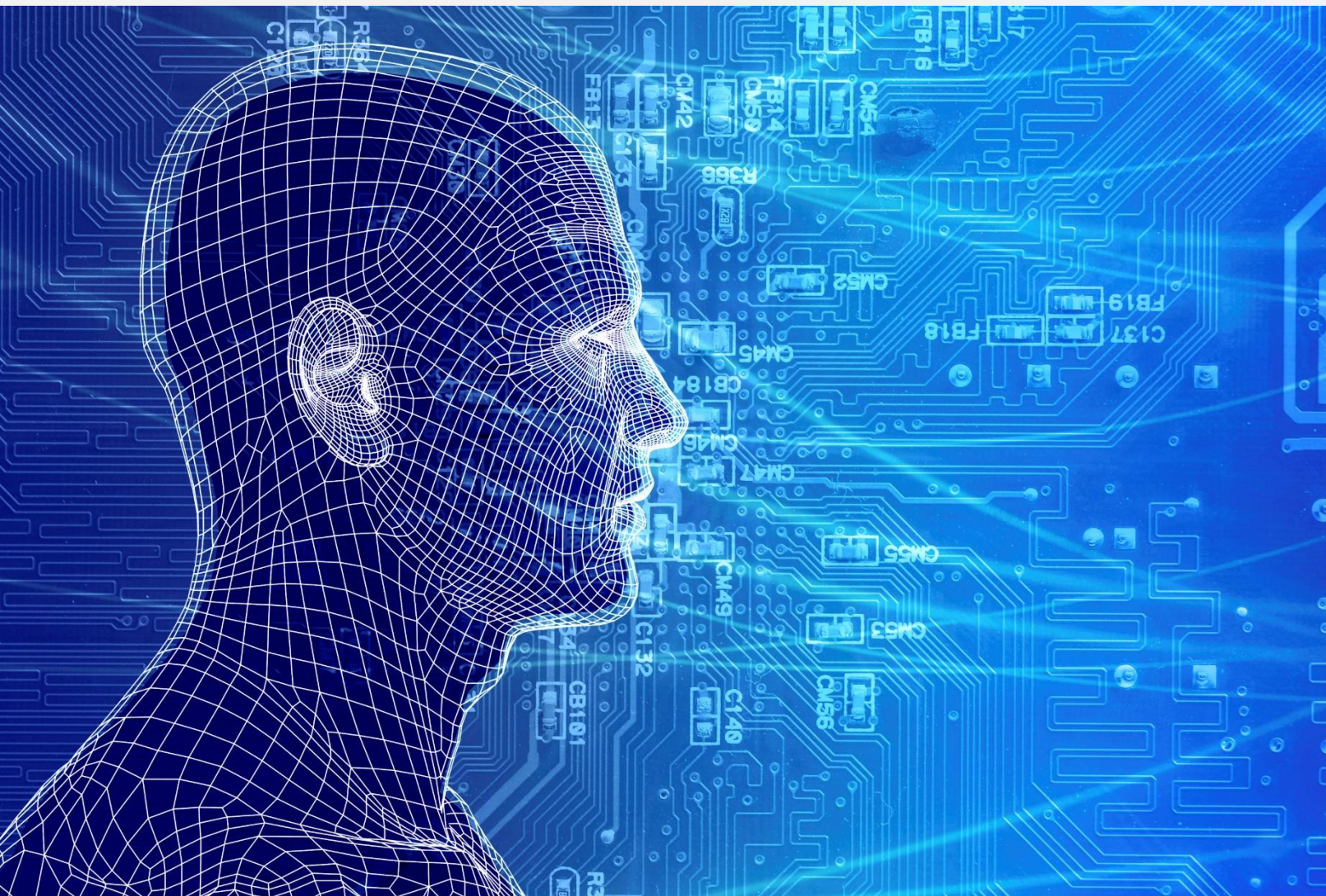


PREPARING THE TEAM



Maritime Operation

What is a Digital Twin?



- Comprehensive & Accurate
- Advanced Analytics and Machine Learning
- Static, historical and real-time data
- Technical to business operations usage
- Context dependent user interface
- Significant CAPEX/OPEX savings